



# Ecologic SIPs | 3D Details

v2 - December 2022

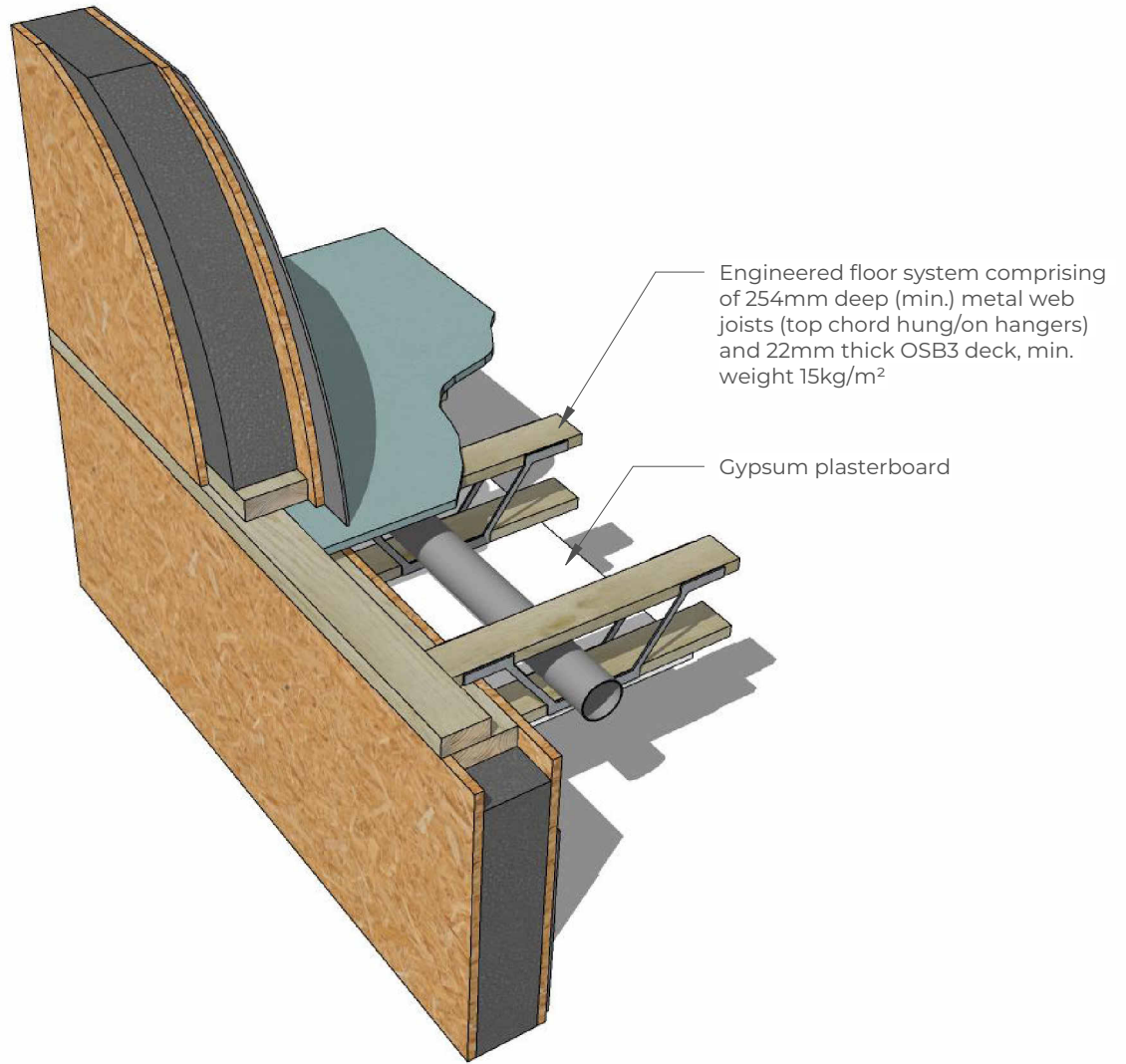


**ECOLOGIC**  
SUSTAINABLE SIP STRUCTURES

Empowering homebuilders and industry professionals to craft design-led, eco-buildings using sustainably sourced materials

# Contents

F02	Typical intermediate joisted floor section
R02	Typical eaves detail vertical section with SIP pitched roof panel (insulation at rafter level
R04	Typical ridge connection details
W02	Typical wall corner fixing diagram
W03	Typical ground bearing floor slab detail with ventilated cladding.
W07	Sectional elevation through beam and block floor
W14	Typical section at window head - brickwork external leaf detail
W16	Standard external finishes



Engineered floor system comprising of 254mm deep (min.) metal web joists (top chord hung/on hangers) and 22mm thick OSB3 deck, min. weight 15kg/m<sup>2</sup>

Gypsum plasterboard



**ECOLOGIC**  
SUSTAINABLE SIP STRUCTURES

Ecologic  
Blue Gates, Black Lane, Bransgore, New  
Forest, Dorset, BH23 8EA  
Tell: 07566 794190  
Fax: 01425 839 291  
Email: [contact@ecologic-sips.co.uk](mailto:contact@ecologic-sips.co.uk)

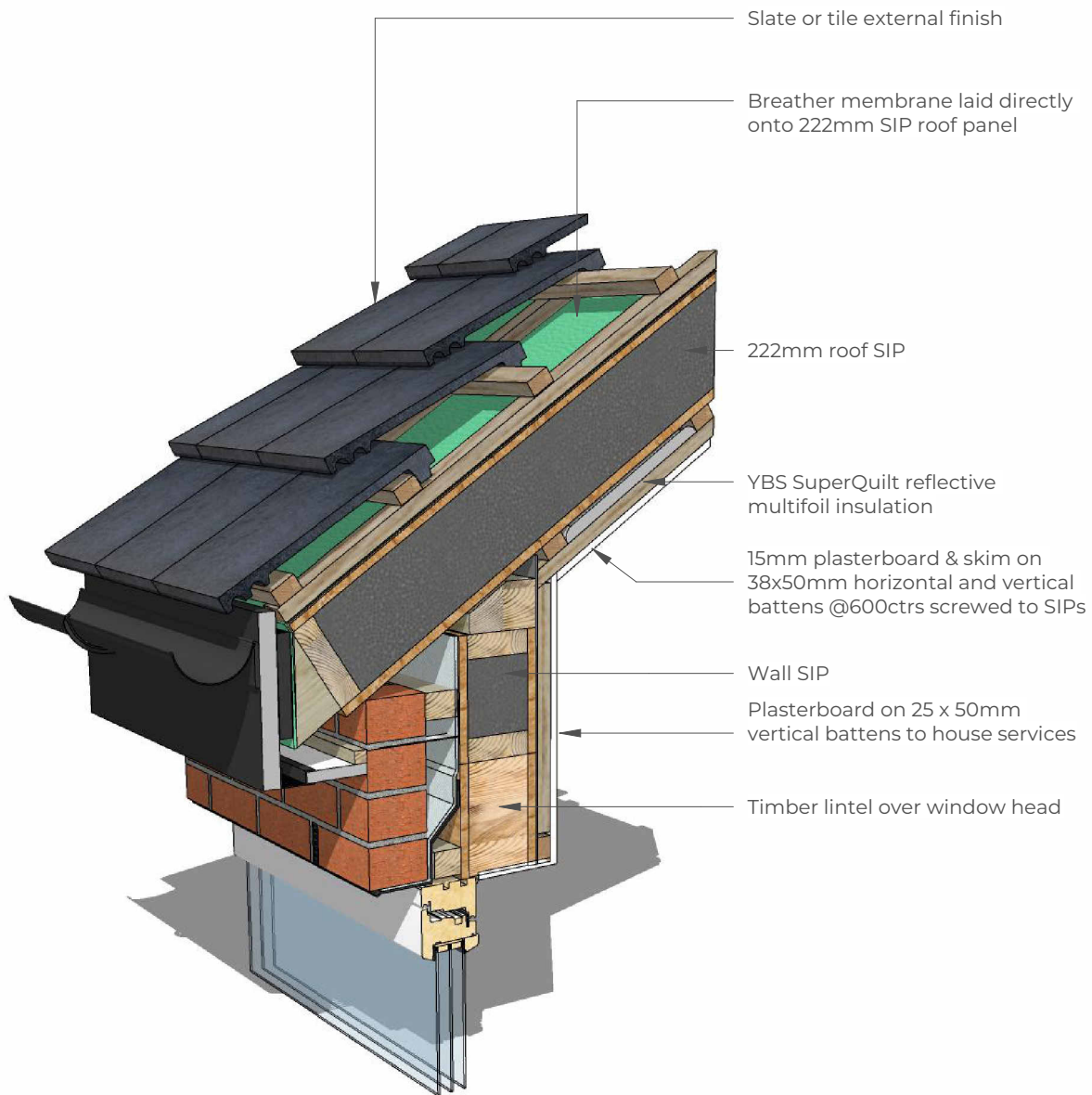
[www.ecologic-sips.co.uk](http://www.ecologic-sips.co.uk)



## Typical intermediate joisted floor section

Date:	03/05/22
Drawn by:	Scale:
RA	NTS

F02



**ECOLOGIC**  
SUSTAINABLE SIP STRUCTURES

Ecologic  
Blue Gates, Black Lane, Bransgore, New  
Forest, Dorset, BH23 8EA  
Tell: 07566 794190  
Fax: 01425 839 291  
Email: [contact@ecologic-sips.co.uk](mailto:contact@ecologic-sips.co.uk)

[www.ecologic-sips.co.uk](http://www.ecologic-sips.co.uk)

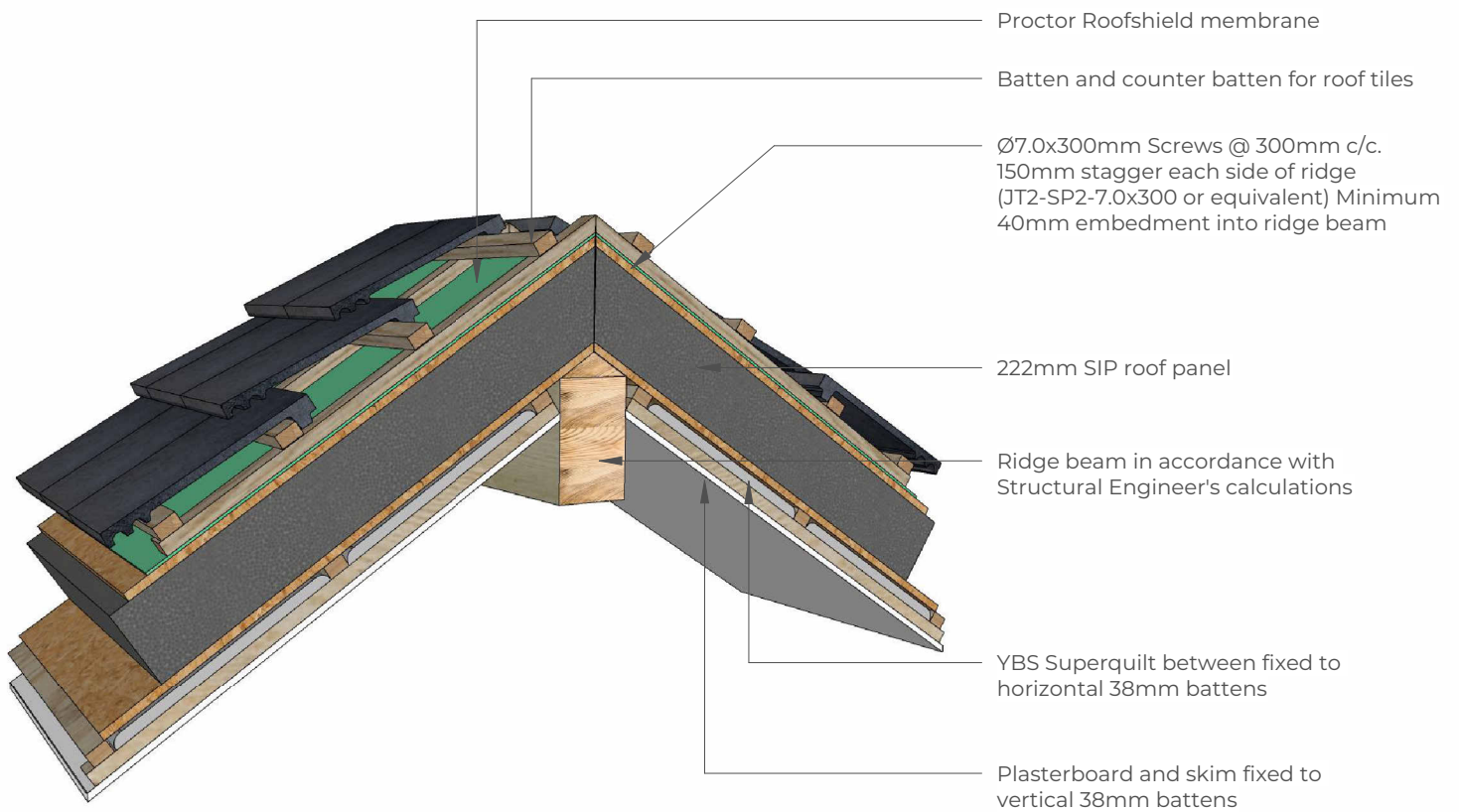


**Typical eaves detail vertical section with SIP pitched roof panel (insulation at rafter level)**

Date: 03/05/22

Drawn by: RA  
Scale: NTS

**R02**



**ECOLOGIC**  
SUSTAINABLE SIP STRUCTURES

Ecologic  
Blue Gates, Black Lane, Bransgore, New  
Forest, Dorset, BH23 8EA  
Tell: 07566 794190  
Fax: 01425 839 291  
Email: [contact@ecologic-sips.co.uk](mailto:contact@ecologic-sips.co.uk)

[www.ecologic-sips.co.uk](http://www.ecologic-sips.co.uk)



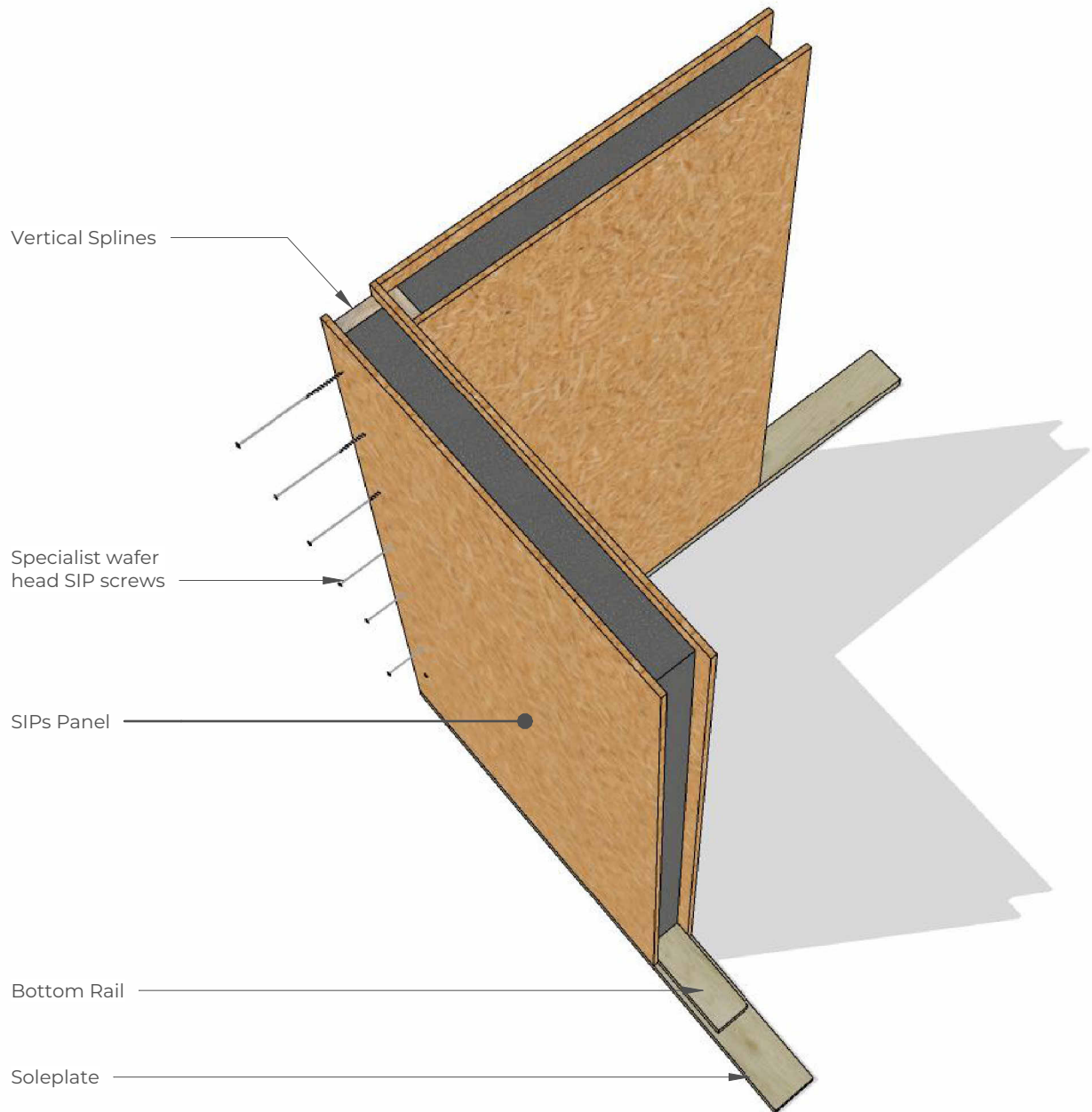
**STRUCTURAL  
TIMBER ASSOCIATION**  
*Building offsite solutions in timber*

## Typical ridge connection details

Date:  
03/05/22

Drawn by: RA  
Scale: NTS

**R04**



All splines to be sealed and adhered using Urethane sealant (Adwick D4 or equivalent)

Note: Internal sheathed stud walls top be constructed from 38x89 CLS, 11mm thick OSB3 sheeting, fixed to intermediate studs with 3.1mm dia. Nails @ 150c/c perimeter & 300c/c internal unless noted otherwise.



**ECOLOGIC**  
SUSTAINABLE SIP STRUCTURES

Ecologic  
Blue Gates, Black Lane, Bransgore, New Forest, Dorset, BH23 8EA  
Tell: 07566 794190  
Fax: 01425 839 291  
Email: contact@ecologic-sips.co.uk

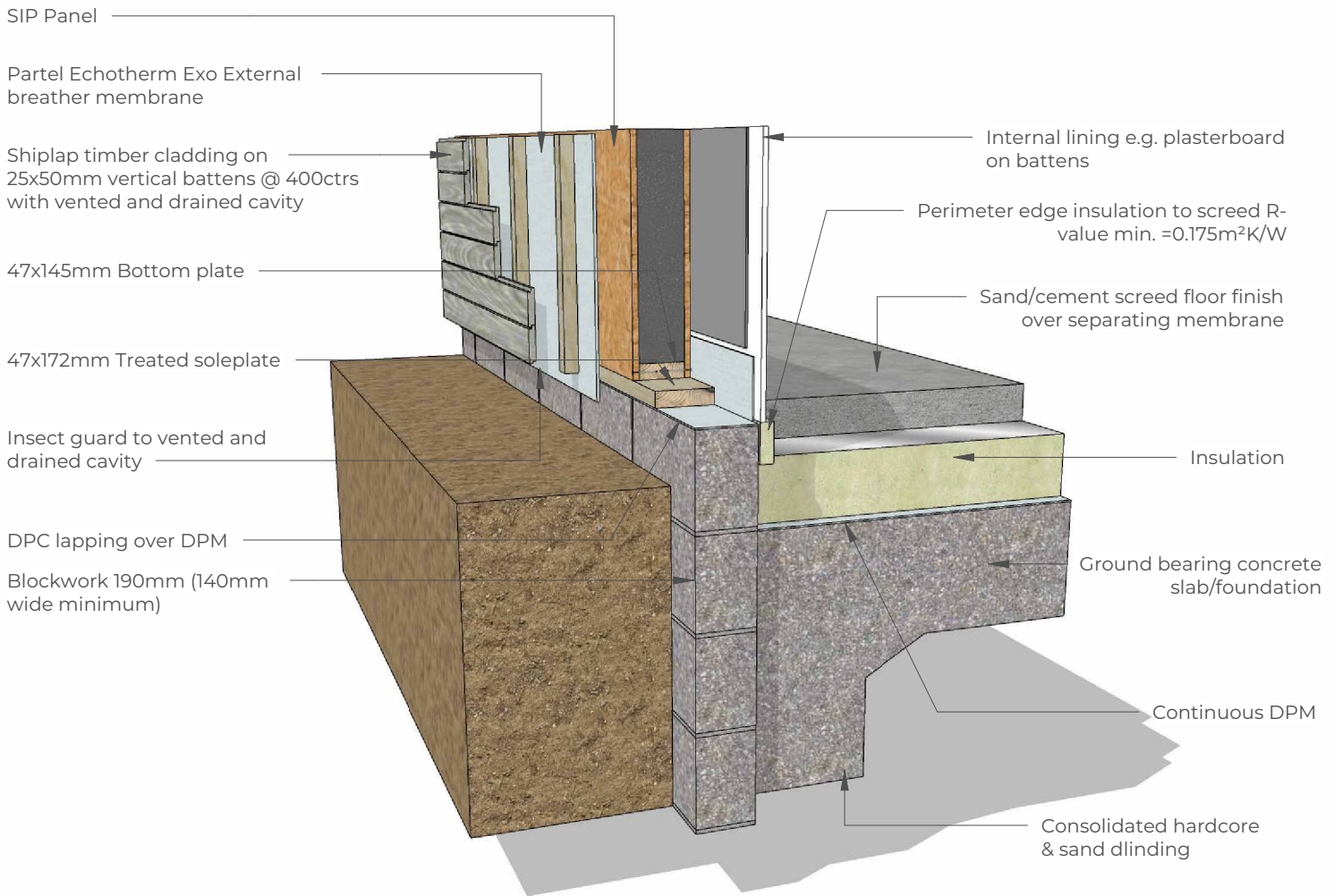
[www.ecologic-sips.co.uk](http://www.ecologic-sips.co.uk)



### Typical wall corner fixing diagram

Date:	03/05/22	
Drawn by:	RA	Scale: NTS

W02



Notes:

1. For further information regarding soleplate/combination soleplate and bottom plate fixings and requirement for additional panel restraint see Fixing Specifications (page 4)
2. Slab should be leveled and shimmed along line of walls to create a level platform for wall construction.



**ECOLOGIC**  
SUSTAINABLE SIP STRUCTURES

Ecologic  
Blue Gates, Black Lane, Bransgore, New Forest, Dorset, BH23 8EA  
Tell: 07566 794190  
Fax: 01425 839 291  
Email: contact@ecologic-sips.co.uk

www.ecologic-sips.co.uk

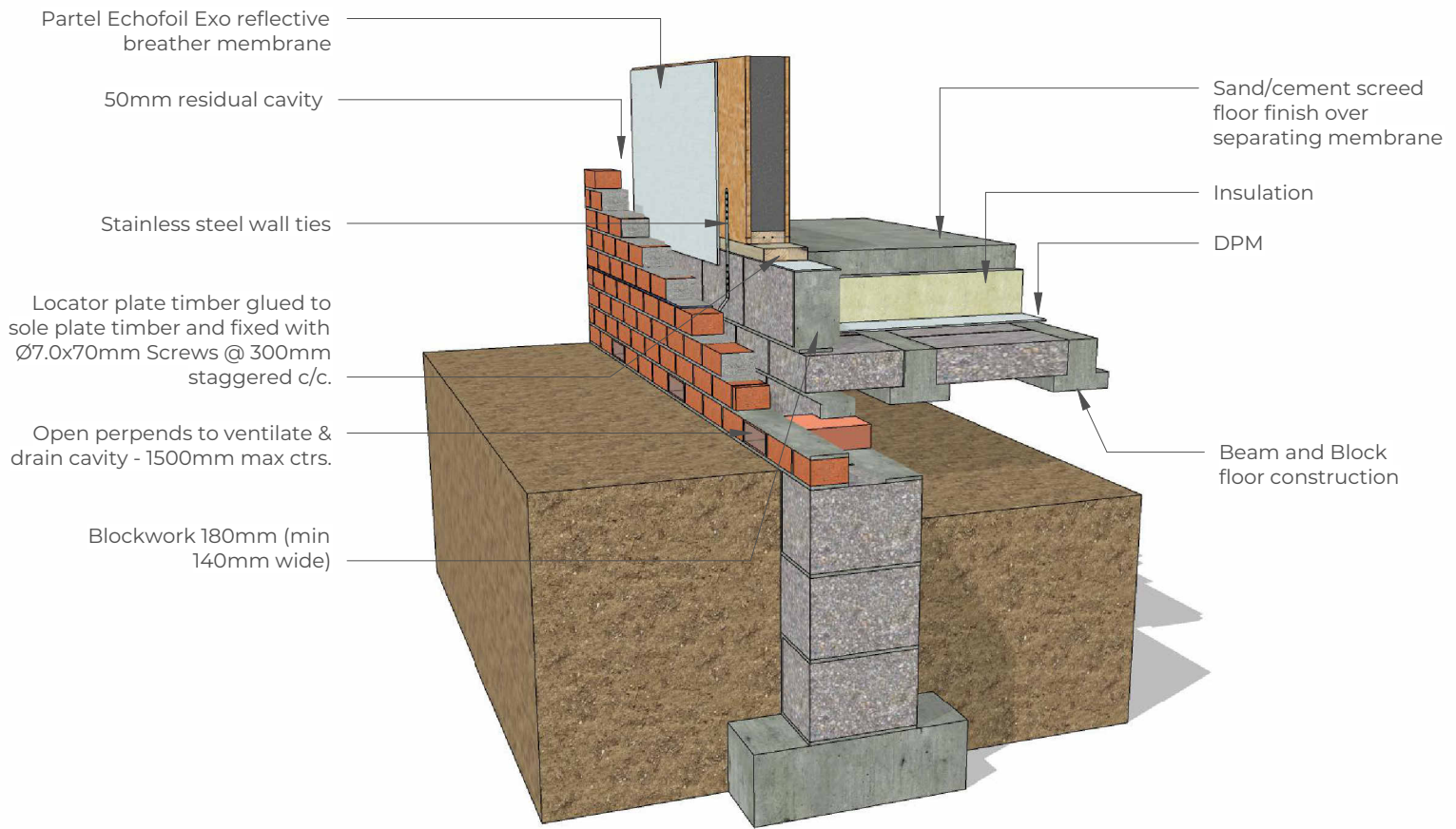


**Typical ground bearing floor slab detail with ventilated cladding.**

Date: 03/05/22

Drawn by: RA  
Scale: NTS

**W03**



**ECOLOGIC**  
SUSTAINABLE SIP STRUCTURES

Ecologic  
Blue Gates, Black Lane, Bransgore, New  
Forest, Dorset, BH23 8EA  
Tell: 07566 794190  
Fax: 01425 839 291  
Email: [contact@ecologic-sips.co.uk](mailto:contact@ecologic-sips.co.uk)

[www.ecologic-sips.co.uk](http://www.ecologic-sips.co.uk)



**STRUCTURAL  
TIMBER ASSOCIATION**  
*Building offsite solutions in timber*

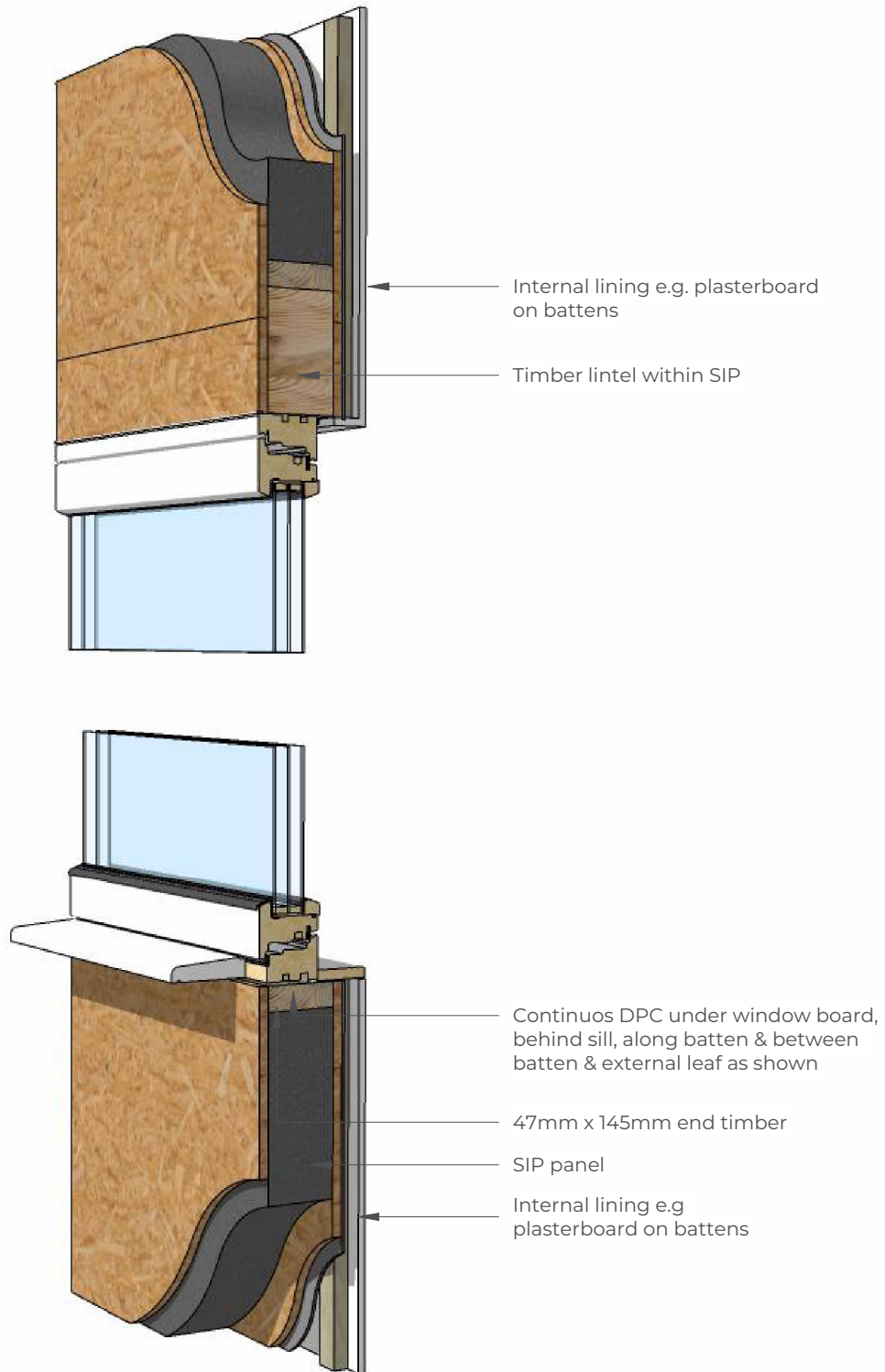
## Sectional elevation through beam and block floor

Date: 03/05/22

Drawn by: RA  
Scale: NTS

**W07**





**Typical section at window head - brickwork external leaf detail**

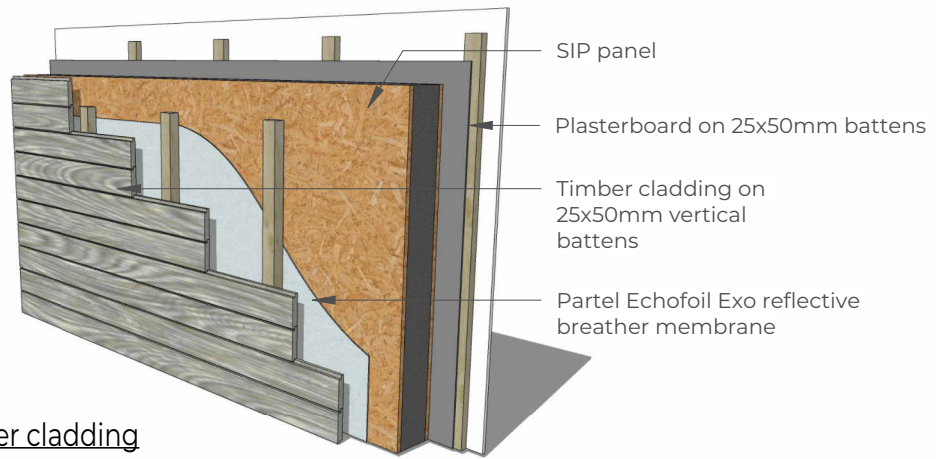
Ecologic  
 Blue Gates, Black Lane, Bransgore, New  
 Forest, Dorset, BH23 8EA  
 Tell: 07566 794190  
 Fax: 01425 839 291  
 Email: [contact@ecologic-sips.co.uk](mailto:contact@ecologic-sips.co.uk)

[www.ecologic-sips.co.uk](http://www.ecologic-sips.co.uk)

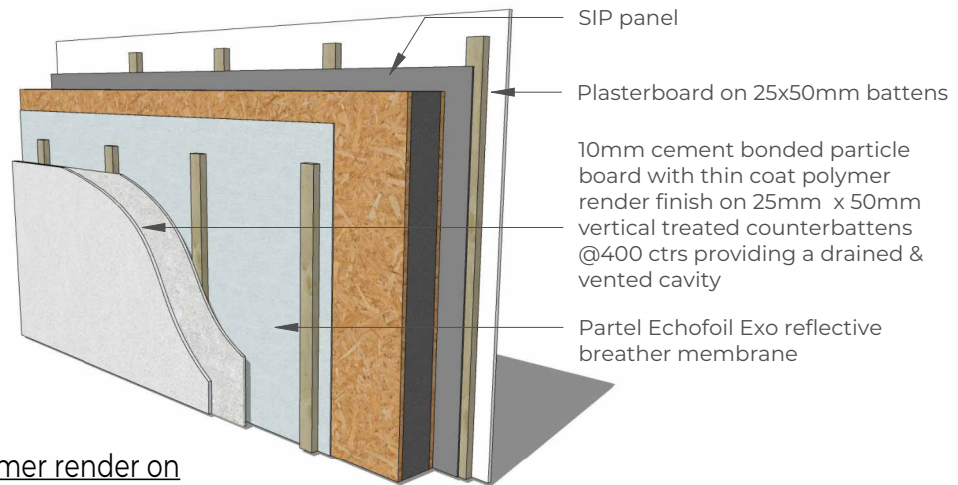


Date:	03/05/22	
Drawn by:	Scale:	
RA	NTS	

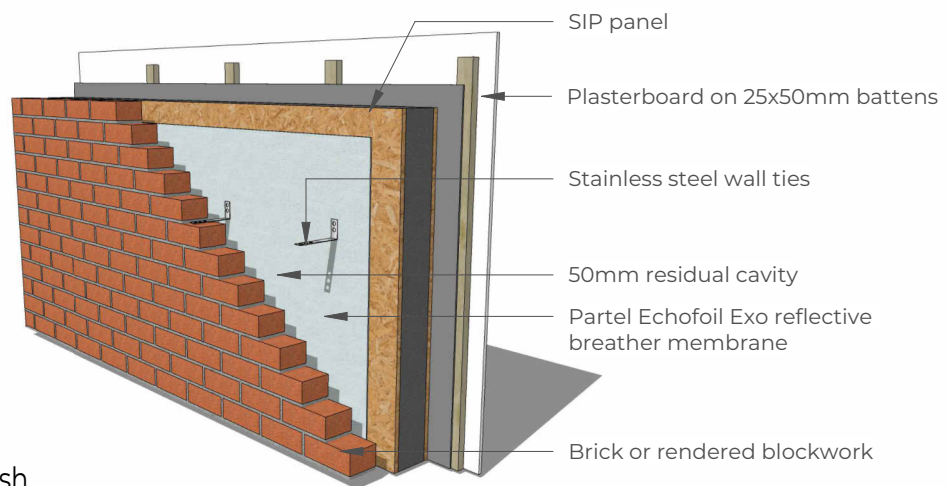




Horizontal timber cladding finish on vertical battens



Thin coat polymer render on vertical battens



Brick cavity finish



**ECOLOGIC**  
SUSTAINABLE SIP STRUCTURES

Ecologic  
Blue Gates, Black Lane, Bransgore, New Forest, Dorset, BH23 8EA  
Tel: 07566 794190  
Fax: 01425 839 291  
Email: [contact@ecologic-sips.co.uk](mailto:contact@ecologic-sips.co.uk)

[www.ecologic-sips.co.uk](http://www.ecologic-sips.co.uk)



## Standard external finishes

Date: 03/05/22

Drawn by: RA  
Scale: NTS

