



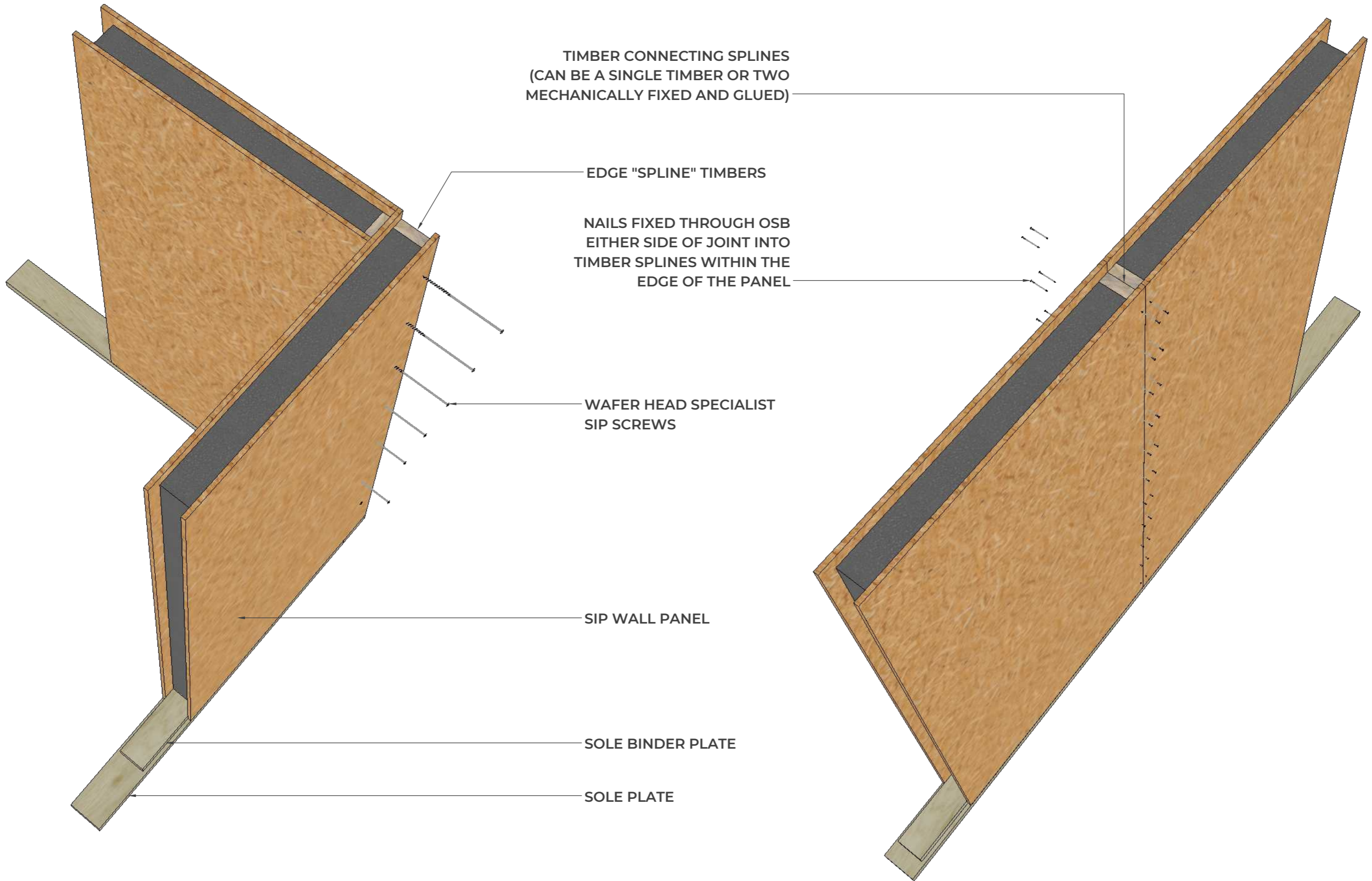
Ecologic SIPs | 3D Architectural Details

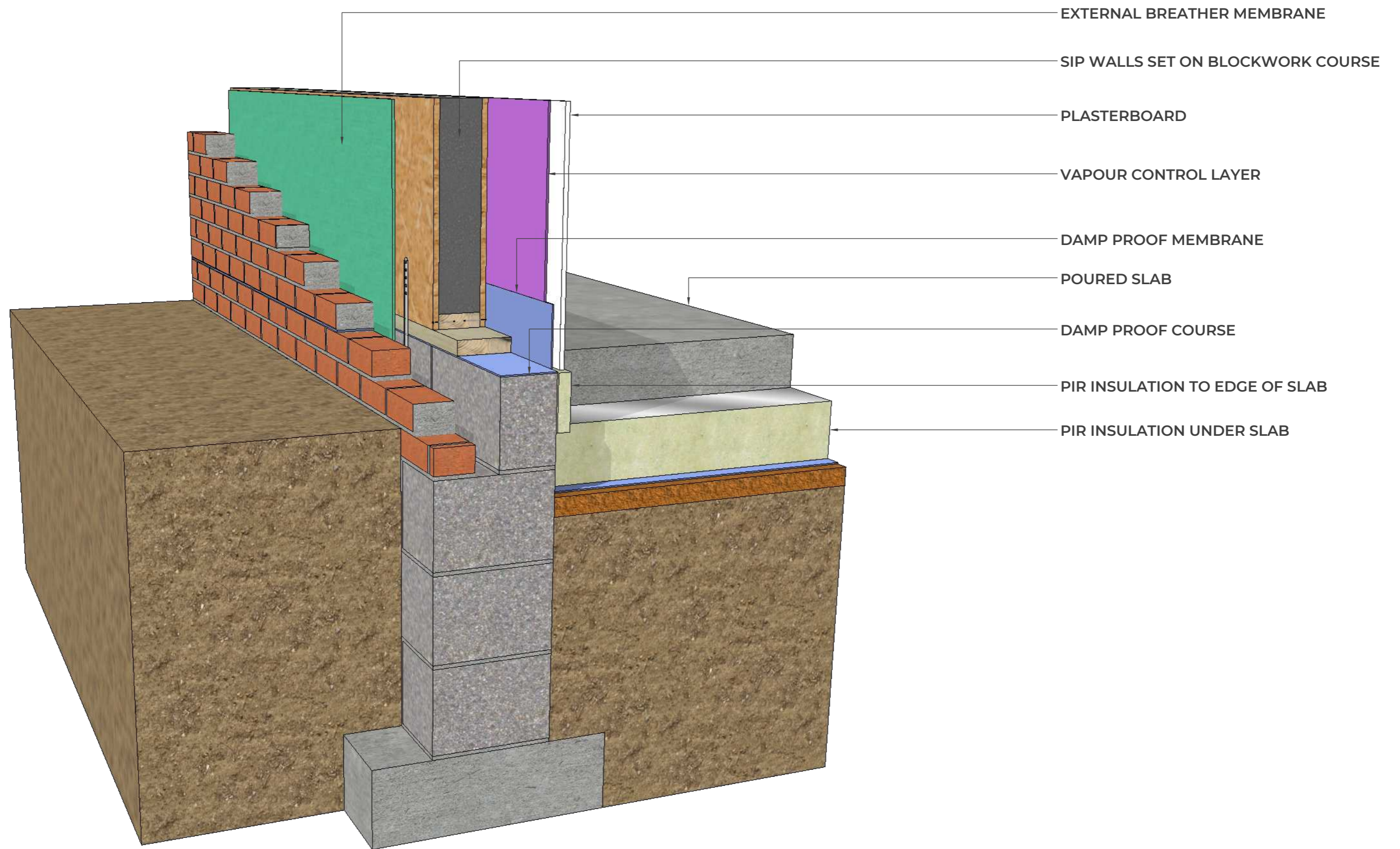
January 2021

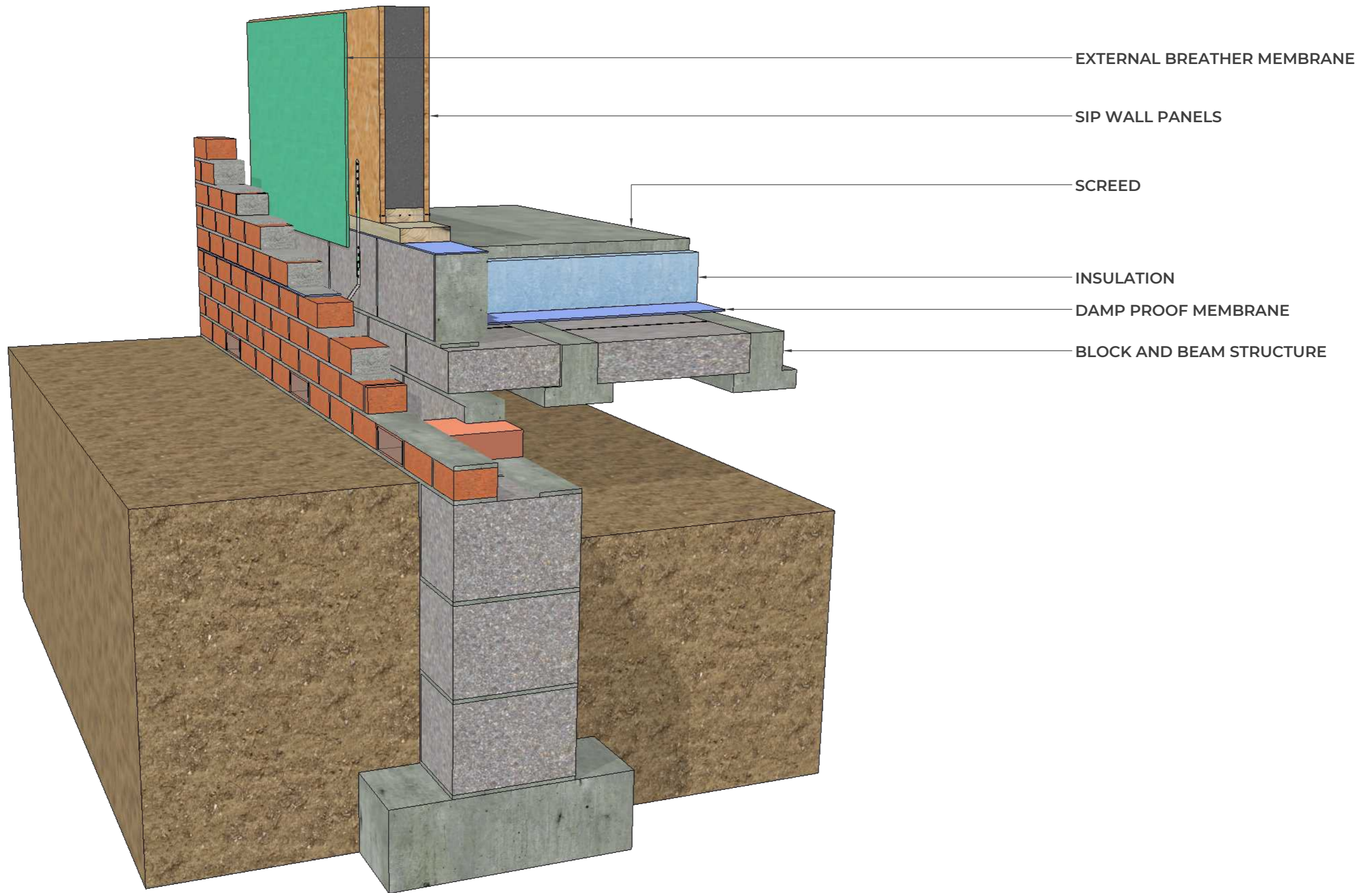


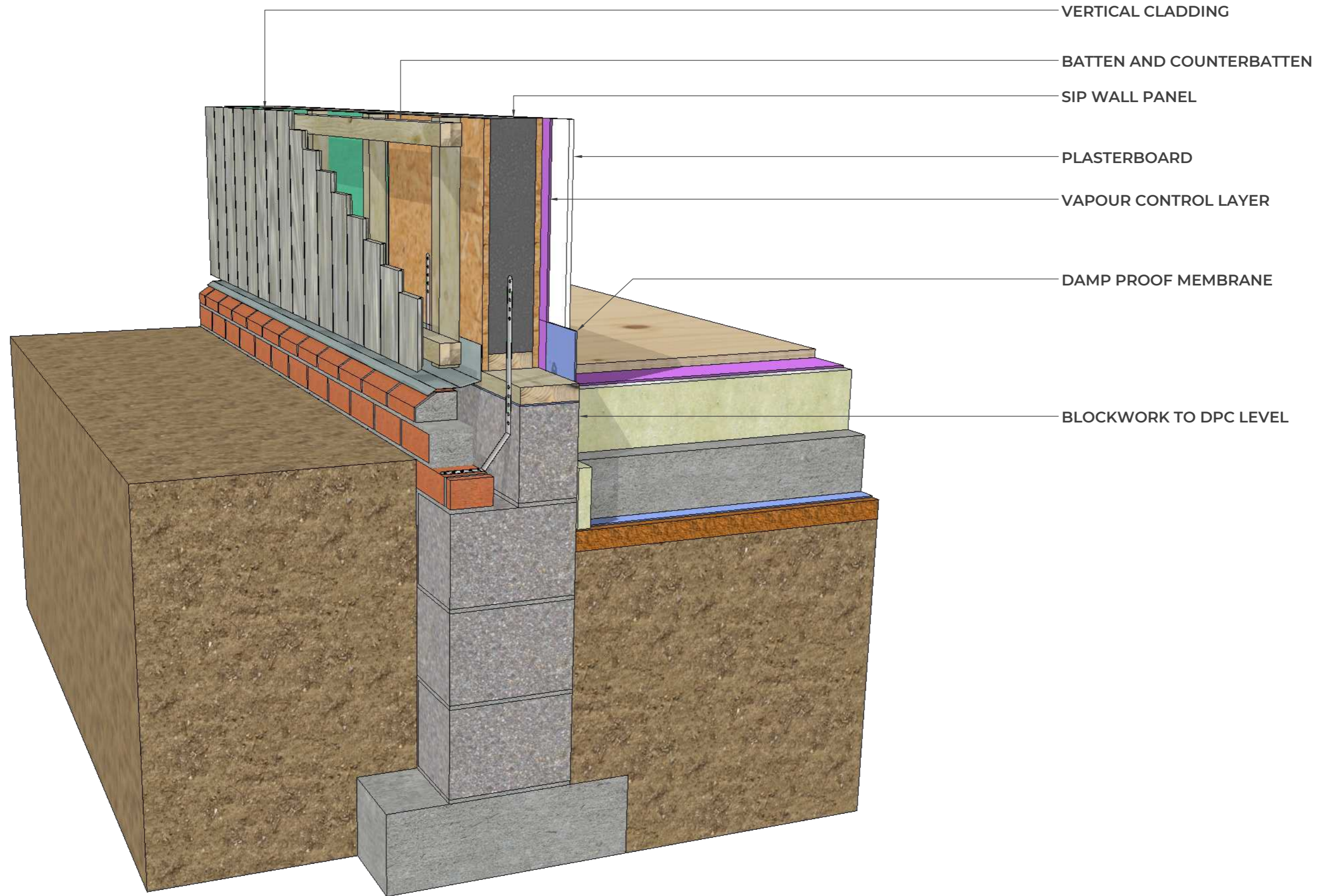
ECOLOGIC
SUSTAINABLE SIP STRUCTURES

Empowering homebuilders and industry professionals to craft design-led, eco-buildings using sustainably sourced materials









VERTICAL CLADDING

BATTEN AND COUNTERBATTEN

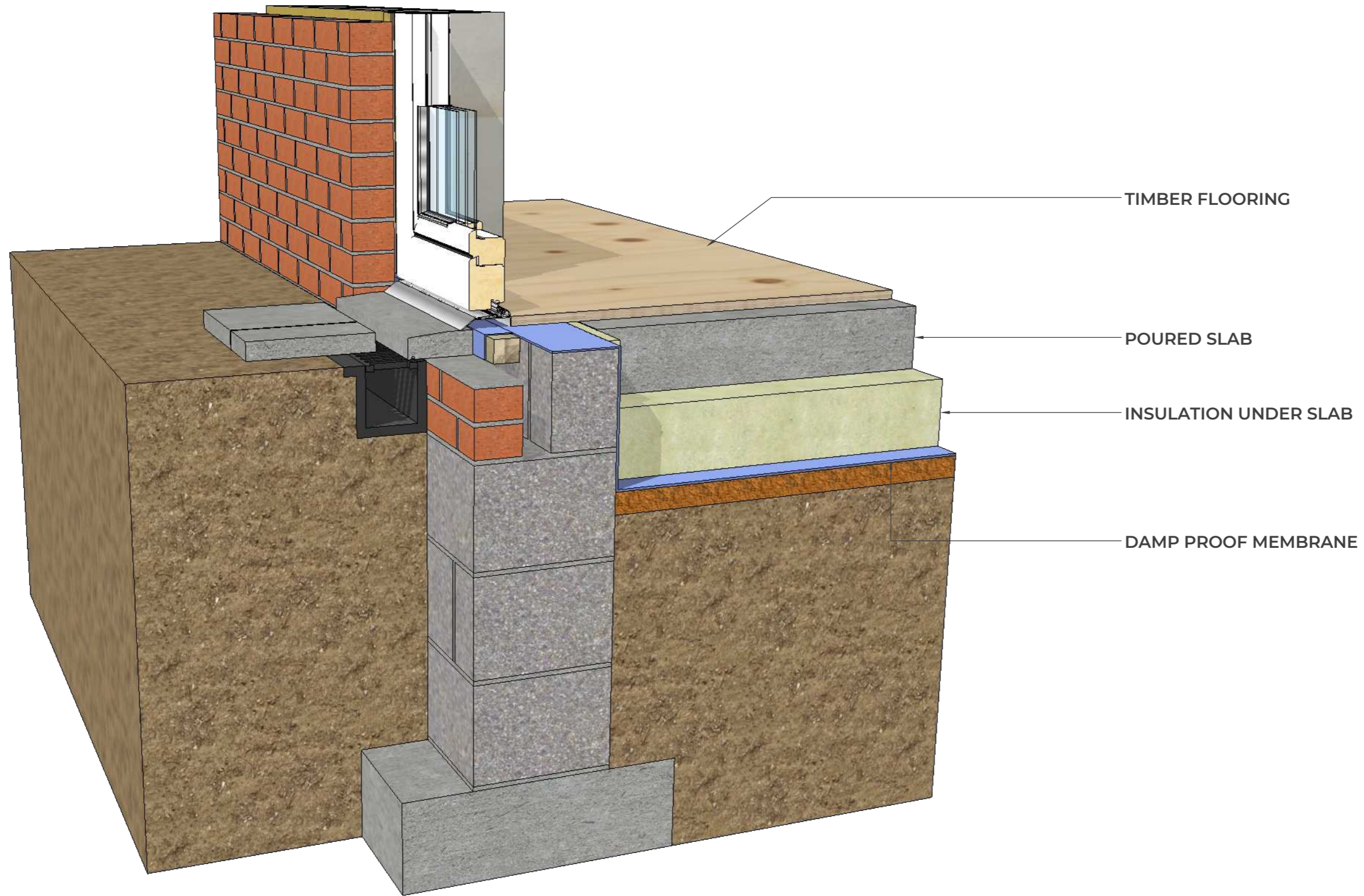
SIP WALL PANEL

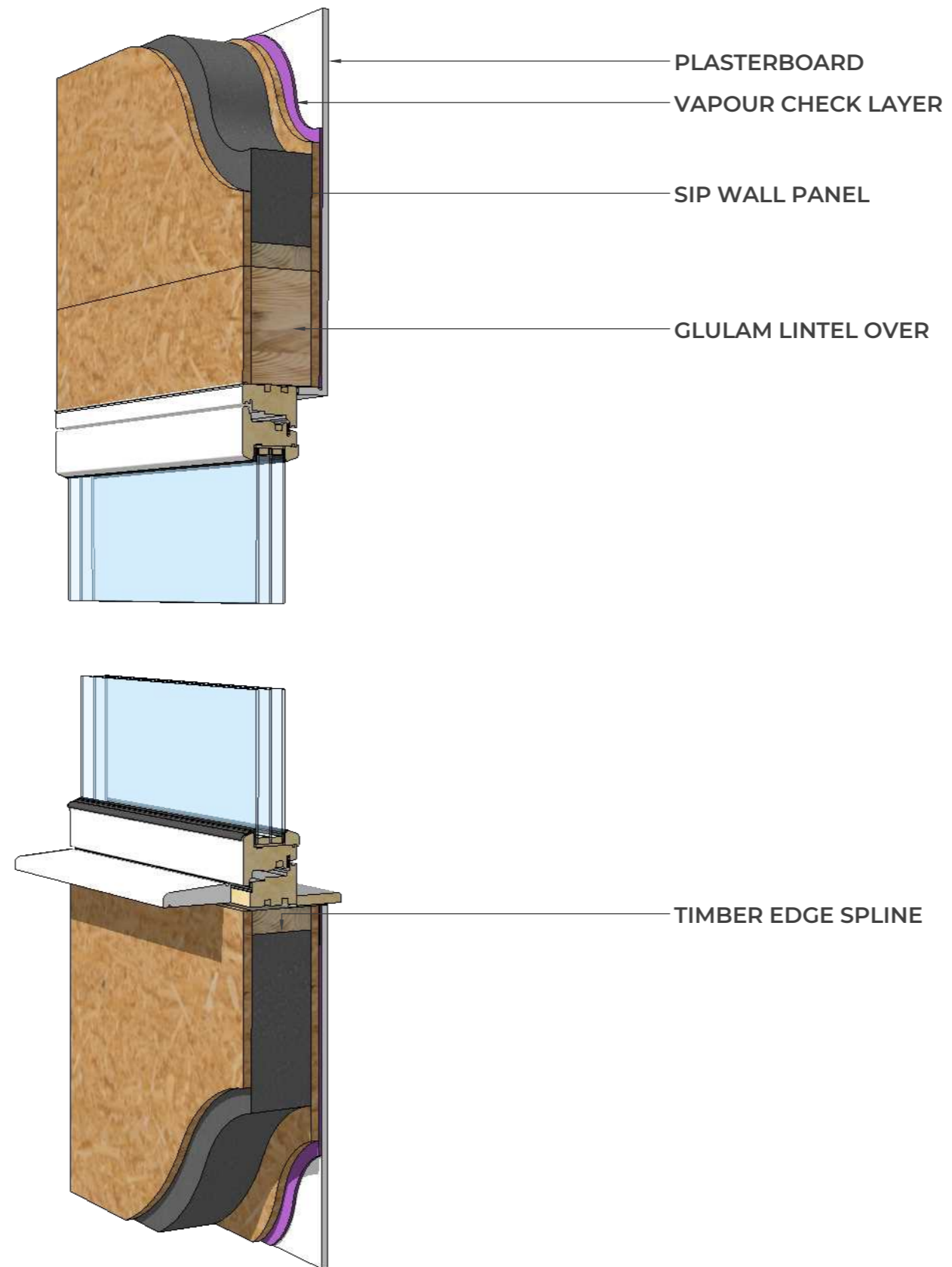
PLASTERBOARD

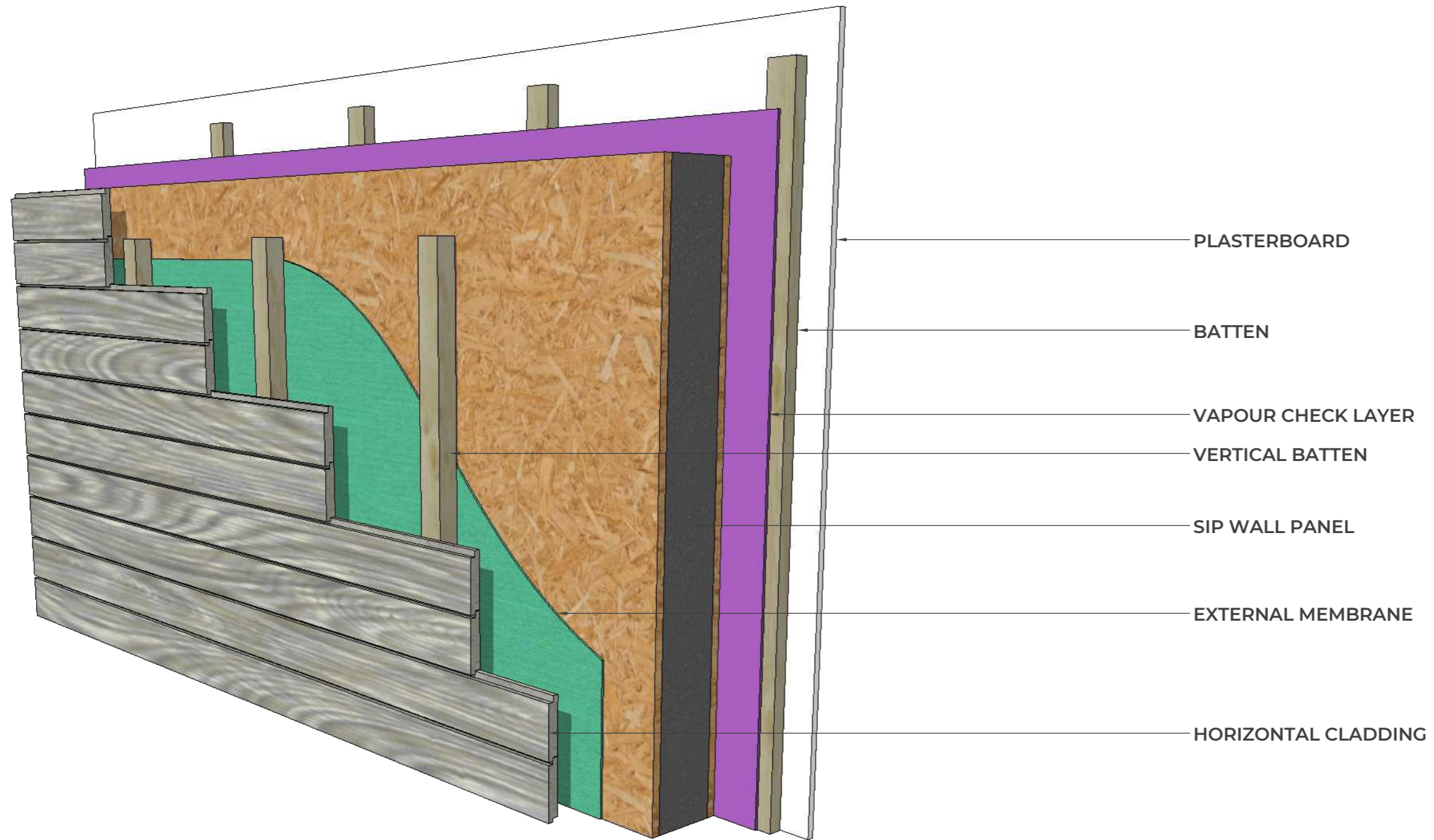
VAPOUR CONTROL LAYER

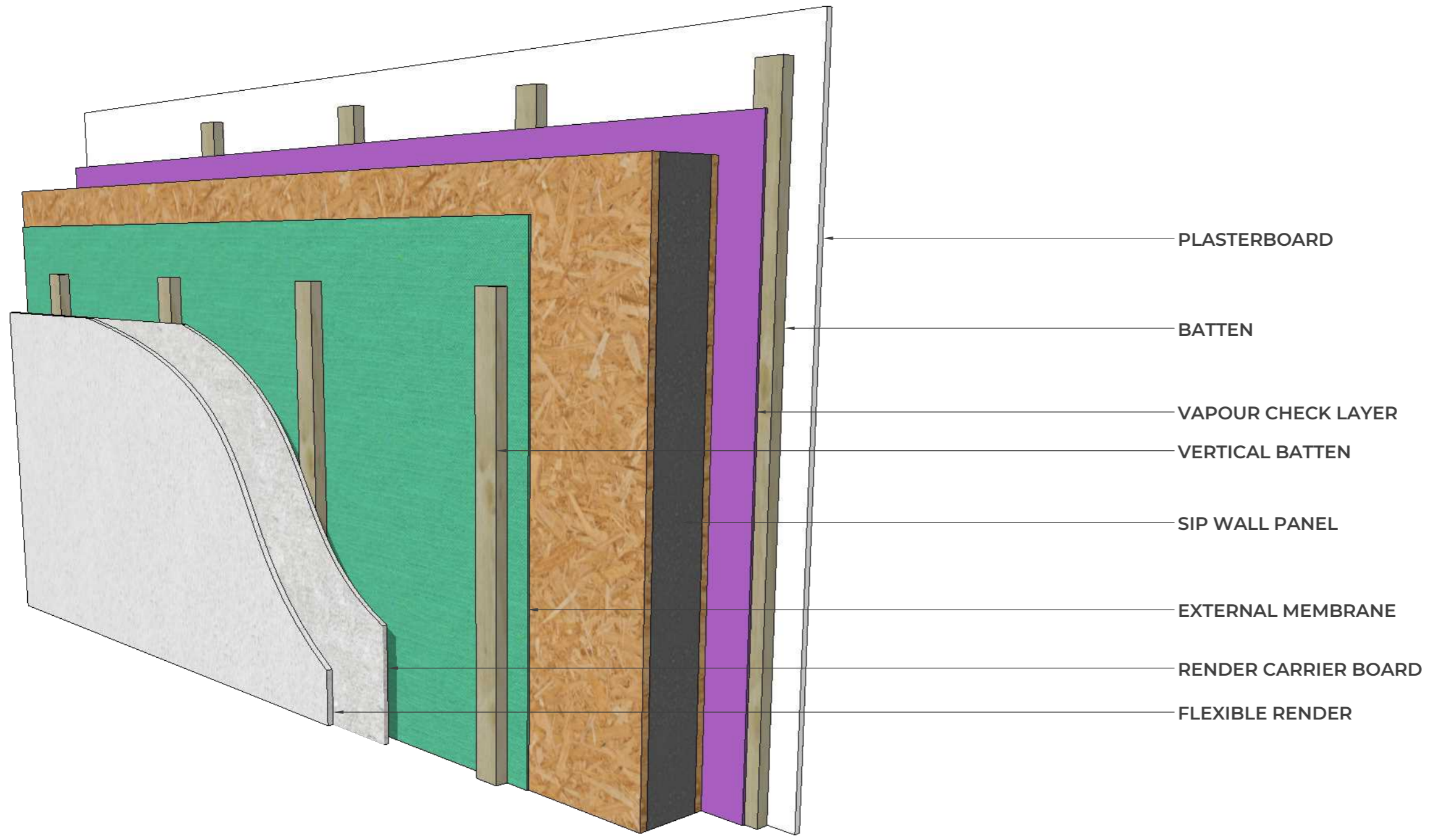
DAMP PROOF MEMBRANE

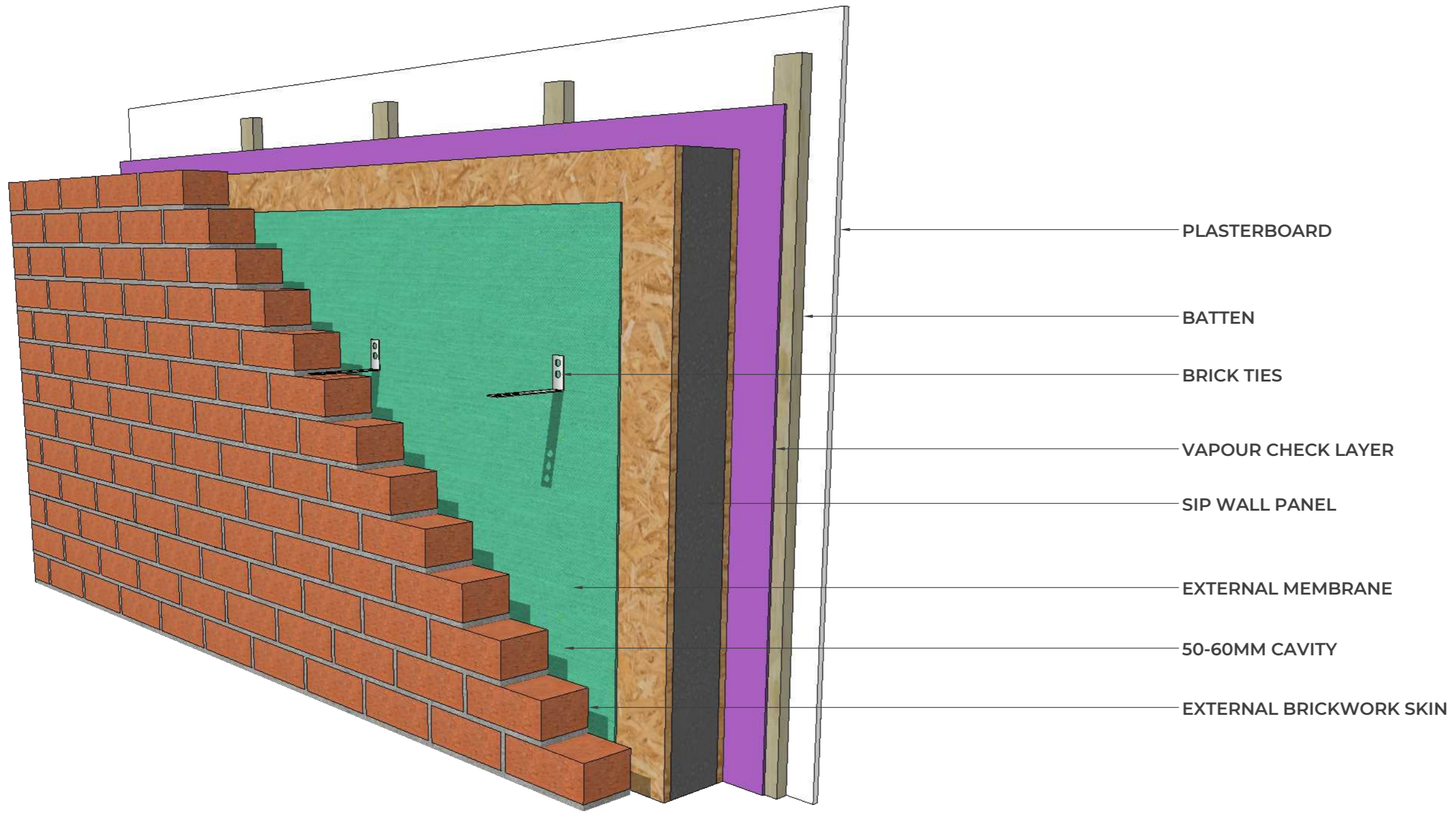
BLOCKWORK TO DPC LEVEL











- PLASTERBOARD
- BATTEN
- BRICK TIES
- VAPOUR CHECK LAYER
- SIP WALL PANEL
- EXTERNAL MEMBRANE
- 50-60MM CAVITY
- EXTERNAL BRICKWORK SKIN

